

25 September 2019

Driveway Masters Pty Ltd
56 Hopkins Street
Moonah
TAS 7009

Dear Sir

DESIGN CERTIFICATION OF RESIDENTIAL DRIVEWAY PAVEMENTS

I certify that the driveway design details shown on drawing Nos CON-01, ASH-01 & SPR-01 conform to current Australian Standards, industry guidelines and the LGAT (Local Government Association of Tasmania) standard specifications.

The drawings have been prepared using the following standards:

- AS 3727.1:2016 Pavements – Part 1: Residential
- AS 2870 – 2011 Residential Slabs & Footings
- AS 1379-2007 Specification and supply of concrete

The driveway designs shown are for sites classified as A, S & M to AS 2870. Any sites with higher classifications should be subject to specific engineering designs.

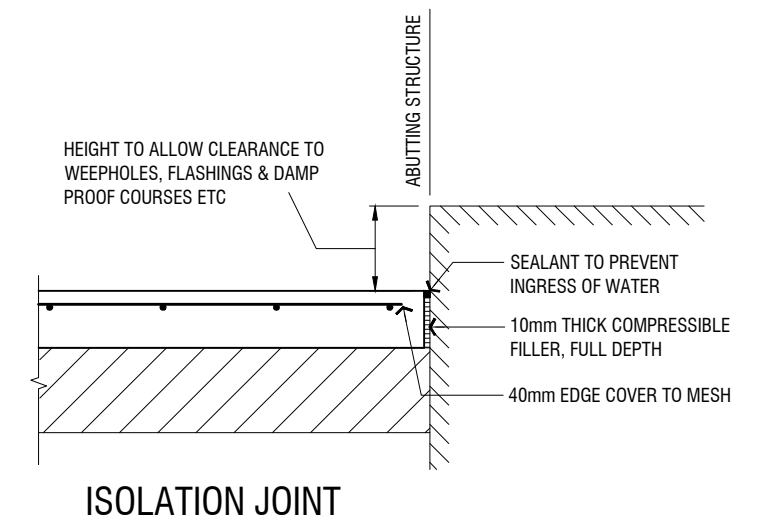
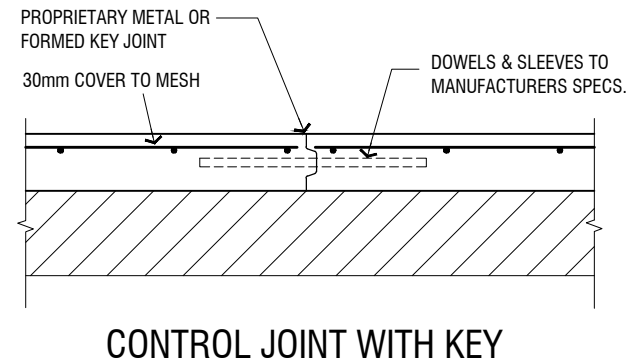
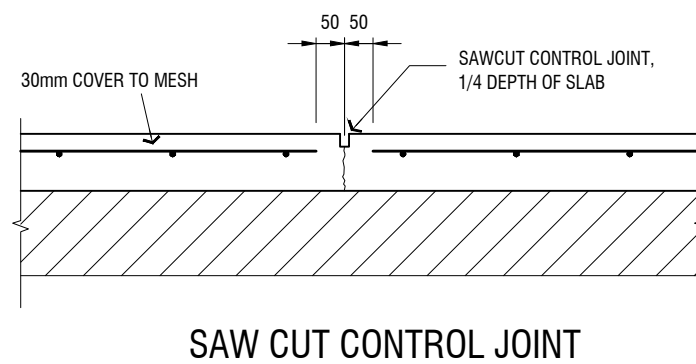
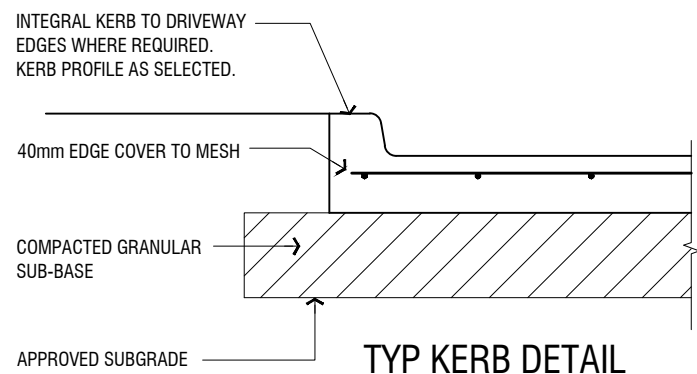
Yours sincerely



Peter Henry
DIRECTOR
HENRY DESIGN & CONSULTING

ACCREDITED BUILDING PRACTITIONER (TAS)
CIVIL ENGINEER - LIC No: CC2703F

Ph: 6248 5195
Mob: 0400 196 061
Email: phenry@netspace.net.au

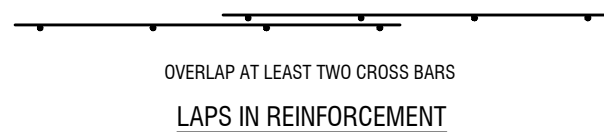


CONCRETE PAVEMENT SPECIFICATION

TRAFFIC TYPE	MINIMUM SLAB THICKNESS ¹	CONCRETE GRADE	MAX CONTROL JOINT SPACING ²	MIN MESH SIZE
PEDESTRIANS ONLY	75mm	N20	N/A	SL62
PEDESTRIANS & LIGHT VEHICLES	100mm	N25	4.0m	SL72
PEDESTRIANS & COMMERCIAL VEHICLES	150mm	N32	4.0m	SL82

NOTES:

- SLAB THICKNESS IS MEASURED FROM THE UNDERSIDE OF THE SLAB TO THE BOTTOM OF ANY TOP SURFACE PATTERNING OR LAYER.
- GENERALLY THE MAXIMUM CONTROL JOINT SPACING SHOULD BE NO GREATER THAN 1.5 TIMES THE WIDTH OF THE SLAB PANEL.
- IN SITUATIONS WHERE A HIGHER DEGREE OF CRACK CONTROL IS REQUIRED (ie DECORATIVE FINISHES OR BRITTLE SURFACING LAYERS), REDUCING THE CONTROL JOINT SPACING OR INCREASING THE REINFORCEMENT SIZE SHOULD BE CONSIDERED.

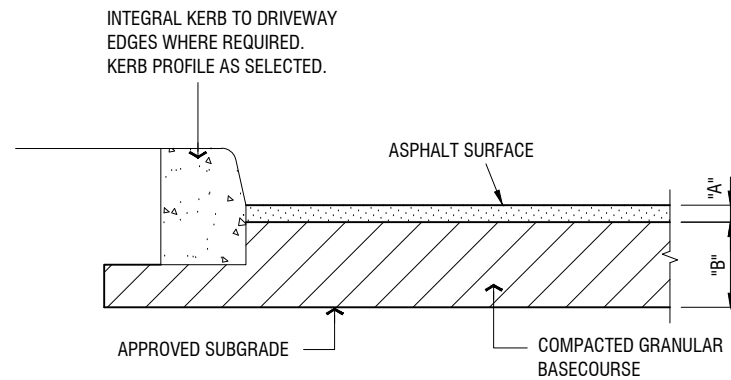


IMPORTANT NOTE
 THE DETAILS SHOWN ON THIS DRAWING ARE FOR RESIDENTIAL DRIVEWAYS INSIDE PROPERTY BOUNDARIES ONLY. REFER LGAT STANDARD DRAWING No TSD-R09-v1 FOR CONSTRUCTION DETAILS IN THE ROAD RESERVE BETWEEN THE COUNCIL ROAD AND LOT BOUNDARY.

CONCRETE DRIVEWAY NOTES

- ALL WORKS TO BE IN ACCORDANCE WITH AS 3727.1:2016.
- THE DETAILS SHOWN ARE FOR "LIGHT VEHICLES" ONLY WITH A MAX GROSS VEHICLE MASS OF 3 TONNES.
- ALL CONCRETE SHALL BE IN ACCORDANCE WITH AS 1379.
- ALL CONCRETE IS TO BE CURED FOR A MINIMUM OF 3 DAYS.
- ALL CONCRETE SHALL BE PROTECTED FROM TRAFFIC UNTIL IT HAS ACHIEVED SUFFICIENT STRENGTH TO RESIST TRAFFIC LOADS, BUT NO LESS THAN SEVEN (7) DAYS.
- PROVIDE TWO (2) N12 BARS X 1000mm LONG TO ALL RE-ENTRANT CORNERS.
- COVER TO REINFORCEMENT SHALL BE AS FOLLOWS:
 30mm TOP
 40mm EDGE
 50mm TO SAWCUT JOINTS
- STEEL REINFORCEMENT TO BE SUPPORTED ON BAR CHAIRS AT MAX 600 CENTRES.
- STEEL REINFORCEMENT SHALL BE LAPPED AS SHOWN.
- STEEL REINFORCEMENT SHALL NOT BE CONTINUOUS THROUGH CONTROL JOINTS.
- SAWCUT JOINTS SHALL BE DONE IN A TIMELY MANNER SO AS TO PREVENT SURFACE CRACKING OF THE CONCRETE. THE CUT SHALL EXTEND THE FULL WIDTH OF THE SLAB.
- THE JOINT LAYOUT SHALL ENSURE JOINTS ARE CONTINUOUS FROM EDGE TO EDGE AND SHALL NOT TERMINATE WITHIN THE PAVED AREA.
- WHERE POSSIBLE THE ANGLE FORMED BETWEEN THE JOINT AND THE SLAB EDGE SHALL BE NOT LESS THAN 70 DEGREES.

No.	Revision	Date	COPYRIGHT: *This document is and shall remain the property of Henry Design & Consulting. The document may only be used for the purpose for which it was commissioned and in accordance with the terms of engagement for the commission. Unauthorised use of this document is prohibited.*	 ABN 91 115 998 724 ACN 115 998 724 Unit 1 / 2 Kennedy Drive Cambridge 7170 TAS Ph (03) 6248 5195	DESIGNED PAH	DRAWN PAH	CLIENT DRIVEWAY MASTERS	DRAWING TITLE TYPICAL DRIVEWAY CONSTRUCTION DETAILS	DRG NO. CON-01	REV
					CHECKED	APPROVED	PROJECT TYPICAL DRIVEWAY DETAILS		SCALE: NOT TO SCALE	DATE: SEPT 2019
								CONCRETE RESIDENTIAL DRIVEWAY		



ASPHALT PAVEMENT

ASPHALT PAVEMENT SPECIFICATION

TRAFFIC TYPE	ASPHALT THICKNESS "A"	BASE THICKNESS "B"	
		CLASS 'A' ¹	CLASS 'S' OR 'M' ¹
PEDESTRIANS ONLY	25mm (AC7)	50mm	100mm
PEDESTRIANS & LIGHT VEHICLES	30mm (AC10)	100mm	150mm
PEDESTRIANS & COMMERCIAL VEHICLES	35mm (AC10)	150mm	200mm

- NOTES:
- SITES ARE TO BE CLASSIFIED IN ACCORDANCE WITH AS 2870 "PAVEMENTS - PART 1: RESIDENTIAL" AND TABLE 1.

TABLE 1 - SITE CLASSIFICATION

FOUNDATION/SUBGRADE	CLASS
MOST SAND & ROCK SITES	'A'
MOST SILT AND SOME CLAY SITES	'S'
MODERATELY REACTIVE CLAY SITES	'M'

- NOTES:
- HIGHLY REACTIVE SITES, EXTREMELY REACTIVE SITES OR SITES WITH SOFT CLAYS, SILTS OR LOOSE SAND ARE NOT COVERED BY THIS SPECIFICATION AND SHOULD BE SUBJECT TO A SPECIFIC ENGINEERING DESIGN.

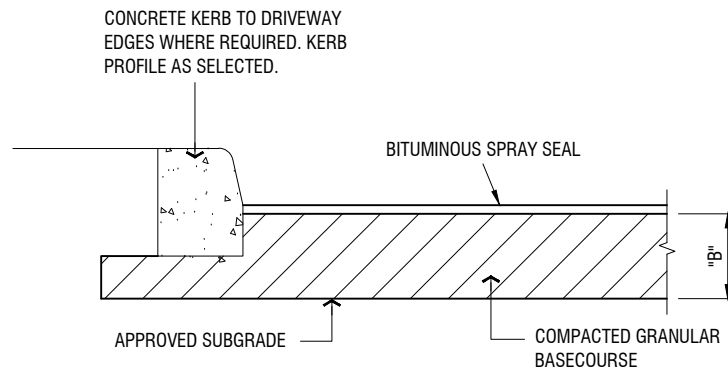
ASPHALT DRIVEWAY NOTES

- ALL WORKS TO BE IN ACCORDANCE WITH AS 3727.1:2016.
- THE DETAILS SHOWN ARE FOR "LIGHT VEHICLES" ONLY WITH A MAX GROSS VEHICLE MASS OF 3 TONNES.
- ASPHALT SHALL BE MANUFACTURED AND PLACED IN ACCORDANCE WITH AS 2150.
- THE BASECOURSE SHALL COMPRISE A WELL GRADED CRUSHED ROCK AND GRAVEL WITH A MAXIMUM PARTICLE SIZE OF 26.5mm AND MAXIMUM CLAY CONTENT OF 6% BY MASS.
- THE BASECOURSE SHALL BE COMPACTED IN 100mm MAX LAYERS WITH AT LEAST 3 PASSES OF A VIBRATING STEEL ROLLER OR EQUIVALENT.
- IMMEDIATELY PRIOR TO PLACING ASPHALT, THE SURFACE OF THE BASE SHALL BE LIGHTLY SPRAYED WITH A BITUMEN EMULSION (TACK COAT).
- THE ASPHALT SHALL BE COMPACTED WHILE HOT (ABOVE 140 DEG C) TO ACHIEVE A DENSE, SMOOTH SURFACE, FREE OF ROLLER MARKS OR LOOSE MATERIAL. COMPACTION SHALL BE BY MECHANICAL STEEL DRUM ROLLERS. IN INACCESSIBLE AREAS, VIBRATORY PLATES AND HAND TAMPERS MAY BE USED.

IMPORTANT NOTE

THE DETAILS SHOWN ON THIS DRAWING ARE FOR RESIDENTIAL DRIVEWAYS INSIDE PROPERTY BOUNDARIES ONLY. REFER LGAT STANDARD DRAWING No TSD-R09-v1 FOR CONSTRUCTION DETAILS IN THE ROAD RESERVE BETWEEN THE COUNCIL ROAD AND LOT BOUNDARY.

No.	Revision	Date	COPYRIGHT:		DESIGNED	DRAWN	CLIENT	DRAWING TITLE	DRG NO.	REV	
			"This document is and shall remain the property of Henry Design & Consulting. The document may only be used for the purpose for which it was commissioned and in accordance with the terms of engagement for the commission. Unauthorised use of this document is prohibited."		PAH	PAH	DRIVEWAY MASTERS	TYPICAL DRIVEWAY CONSTRUCTION DETAILS	ASH-01		
			 ABN 91 115 998 724 ACN 115 998 724 Unit 1 / 2 Kennedy Drive Cambridge 7170 TAS Ph (03) 6248 5195		CHECKED	APPROVED	PROJECT	TYPICAL DRIVEWAY DETAILS			
					SCALE: NOT TO SCALE		DATE: SEPT 2019	CAD FILE No: DRIVEWAY SPEC SHEET	ASPHALT RESIDENTIAL DRIVEWAY	SHEET OF	A1



BITUMINOUS SPRAY-SEAL PAVEMENT

SPRAY-SEAL PAVEMENT SPECIFICATION

TRAFFIC TYPE	BASE THICKNESS "A"	
	CLASS 'A' ¹	CLASS 'S' OR 'M' ¹
PEDESTRIANS ONLY	100mm	125mm
PEDESTRIANS & LIGHT VEHICLES	150mm	230mm
PEDESTRIANS & COMMERCIAL VEHICLES	200mm	300mm

NOTES:

- SITES ARE TO BE CLASSIFIED IN ACCORDANCE WITH AS 2870 "PAVEMENTS - PART 1: RESIDENTIAL" AND TABLE 1.

TABLE 1 - SITE CLASSIFICATION

FOUNDATION/SUBGRADE	CLASS
MOST SAND & ROCK SITES	'A'
MOST SILT AND SOME CLAY SITES	'S'
MODERATELY REACTIVE CLAY SITES	'M'

NOTES:


- HIGHLY REACTIVE SITES, EXTREMELY REACTIVE SITES OR SITES WITH SOFT CLAYS, SILTS OR LOOSE SAND ARE NOT COVERED BY THIS SPECIFICATION AND SHOULD BE SUBJECT TO A SPECIFIC ENGINEERING DESIGN.

BITUMINOUS SPRAY-SEAL DRIVEWAY NOTES

- ALL WORKS TO BE IN ACCORDANCE WITH AS 3727.1:2016.
- THE DETAILS SHOWN ARE FOR "LIGHT VEHICLES" ONLY WITH A MAX GROSS VEHICLE MASS OF 3 TONNES.
- SPRAY SEALED PAVEMENTS SHALL BE CONSTRUCTED IN ACCORDANCE WITH AUSTRROADS SPECIFICATION "AP-PWT21-00.
- THE BASECOURSE SHALL COMPRISE A WELL GRADED CRUSHED ROCK AND GRAVEL WITH A MAXIMUM PARTICLE SIZE OF 26.5mm AND MAXIMUM CLAY CONTENT OF 6% BY MASS.
- THE BASECOURSE SHALL BE COMPACTED IN 100mm MAX LAYERS WITH AT LEAST 3 PASSES OF A VIBRATING STEEL ROLLER OR EQUIVALENT.
- IMMEDIATELY PRIOR TO THE APPLYING THE BITUMINOUS SPRAY SEAL THE SURFACE OF THE BASE SHALL BE SPRAYED WITH A PRIMING COAT OF CUT BACK BITUMEN. SPRAY SEALING SHALL NOT OCCUR WHILE THE PRIMER REMAINS WET TO TOUCH.
- FOR 10mm AGGREGATE, THE BITUMEN SHALL BE SPRAYED ONTO THE PRIMED SURFACE AT THE RATE OF 1.3 TO 1.5 L/sqm.
- CLEAN DRY AGGREGATE SHALL BE SPREAD ON THE SPRAYED BITUMEN AS SOON AS PRACTICABLE AFTER SPRAYING. THE AGGREGATE SHALL THEN BE EMBEDDED INTO THE BITUMEN USING A ROLLER. THE TIME BETWEEN SPRAYING & COMPLETION OF EMBEDMENT AT ANY ONE POINT SHALL NOT EXCEED 20 MINUTES.

IMPORTANT NOTE

THE DETAILS SHOWN ON THIS DRAWING ARE FOR RESIDENTIAL DRIVEWAYS INSIDE PROPERTY BOUNDARIES ONLY. REFER LGAT STANDARD DRAWING No TSD-R09-v1 FOR CONSTRUCTION DETAILS IN THE ROAD RESERVE BETWEEN THE COUNCIL ROAD AND LOT BOUNDARY.

No.	Revision	Date	COPYRIGHT:		DESIGNED	DRAWN	CLIENT	DRAWING TITLE		DRG NO.	REV	
			"This document is and shall remain the property of Henry Design & Consulting. The document may only be used for the purpose for which it was commissioned and in accordance with the terms of engagement for the commission. Unauthorised use of this document is prohibited."		PAH	PAH	DRIVEWAY MASTERS	TYPICAL DRIVEWAY CONSTRUCTION DETAILS		SPR-01		
			 ABN 91 115 998 724 ACN 115 998 724 Unit 1 / 2 Kennedy Drive Cambridge 7170 TAS Ph (03) 6248 5195		CHECKED	APPROVED	PROJECT	TYPICAL DRIVEWAY DETAILS				
					SCALE:		DATE:	CAD FILE No:	SPRAY-SEALED RESIDENTIAL DRIVEWAY		SHEET OF	A1
					NOT TO SCALE		SEPT 2019	DRIVEWAY SPEC SHEET				